

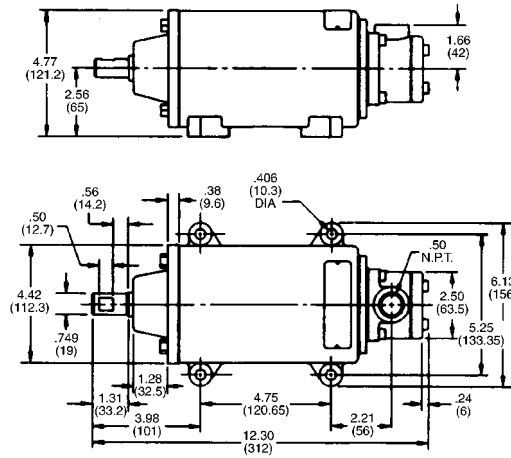
Model 750 – Type W



Splash-Proof



DIMENSIONS INCHES (MILLIMETERS)



The Model 750 DC Tachometer-Generator embodies a permanent magnet field surrounding a rotating armature. The commutator segments are made from a special non-corrosive alloy which has an exceptionally long life. The brushes are of a self-lubricating material and are carried in a self-aligning holder which equalizes the pressure of both brushes. The armature shaft rotates on ball bearings which under normal operation do not need lubrication for 15,000 hours running time or approximately 3 years, whichever comes first. Maximum recommended speed is 5,000 rpm. Brush life is greatest at the lower speeds.

Rigid, heavy-duty cast-iron base mounting type housing, with 3/4" diameter shaft supported by heavy duty ball bearings for direct coupling, pulley, spur gear or chain and sprocket drive. Provided with conduit junction box with 1/2" N.P.T. opening suitable for flexible conduit which may be located in anyone of four positions at right angle to shaft. Designed for locations which are subject to mechanical abuse or water spray, such as paper mills and chemical plants where cleaning up by hose is frequent. Housing is gasket sealed.

Approximate torque: 2.0 oz. in. starting, 2.0 oz.-in. running (1000 RPM)

Approx weight: 24.5 lbs (11.1 kgs)

Cat. No. 750-9905002.

Replacement Brush Kit

Metallic leaf brushes are of an alloy which will wear before the commutator bars. Brush replacement is a simple field operation.

Part No. 249302.901

SPECIFICATIONS

VOLTAGE OUTPUT AT 1000 RPM:

6 Volts $\pm 1\%$ Per 1000 RPM

ACCURACY:

$\pm 1\%$

EMF LINEARITY 1:

$\pm 0.15\%$

PERMISSIBLE CURRENT DRAIN:

50 mA

MAX. RMS VALUE OF AC RIPPLE:

2%

ALLOWABLE END PLAY:

.005"

MAX OPERATING TEMPERATURE:

250°F

INTERNAL RESISTANCE AT 25°C:

20 Ohms $\pm 2\%$

NUMBER OF BRUSHES:

2 Per Set

COMPOSITION OF BRUSHES:

Palladium Silver Alloy

ARMATURE:

12 Bars, 12 Slots

INSULATION:

Insulation Class 105

HI-POT TEST:

500 Volts for 1 Min.

BEARINGS:

Ball

TEMPERATURE

COMPENSATION:

0.1% Per 10°C Change

NORMAL CONTINUOUS:

2000 RPM

MIN SPEED:

100 RPM

MAX TOP SPEED 2:

5000 RPM

STARTING TORQUE:

2.0 oz. ins.

RUNNING TORQUE AT

1000 RPM:

2.0 oz. ins.

WEIGHT:

24.5 lbs.

LENGTH:

12.3"

HEIGHT:

4.77"

WIDTH:

6.13"

MOUNTING:

Base

ENCLOSURE:

Weatherproof

SHAFT DIAMETER:

3/4" Square

SHAFT CONNECTION:

Direct, Geared or Belted

SHAFT LENGTH:

1 1/2"

ADJUSTABLE MAGNETIC

SHUNT RANGE:

$\pm 4\%$

DIRECTION OF

ROTATION EFFECT:

$\pm 0.6\%$

TACHOMETERS/
GENERATORS